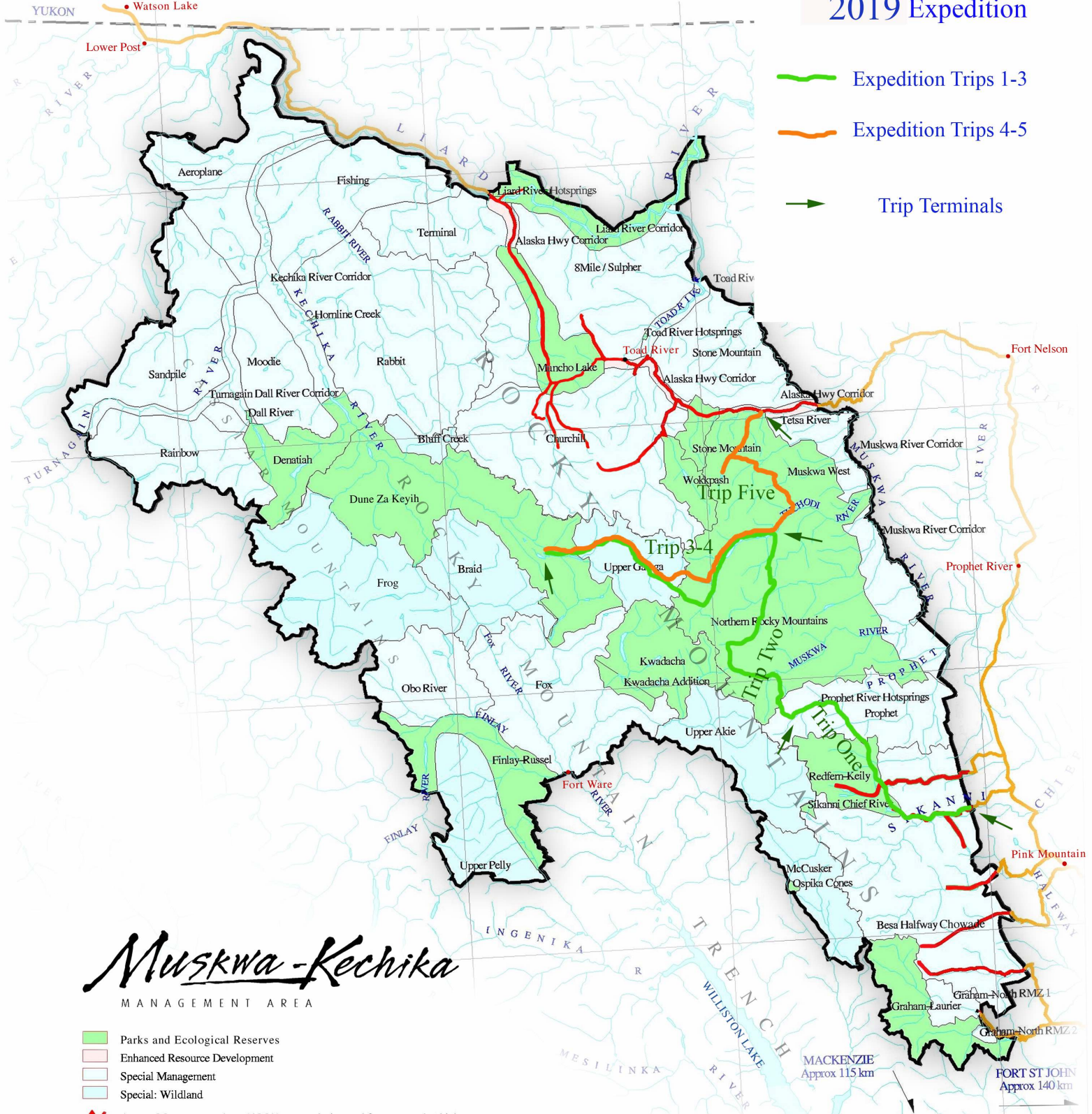


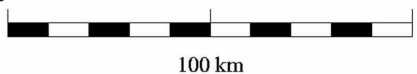
Muskwa-Kechika 2019 Expedition



- Expedition Trips 1-3
- Expedition Trips 4-5
- ➔ Trip Terminals

Muskwa-Kechika MANAGEMENT AREA

- Parks and Ecological Reserves
- Enhanced Resource Development
- Special Management
- Special: Wildland
- ↔ Access Management Area (AMA) routes designated for managed vehicle use
- ↔ Roads and trails not within the Muskwa-Kechika Management area



MACKENZIE
Approx 115 km

FORT ST JOHN
Approx 140 km